

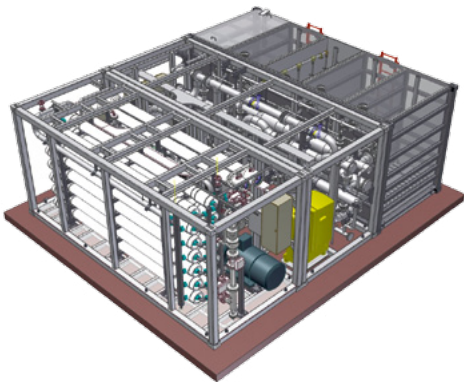
# IDE PROGREEN™

## Chemical-free, modular and compact SWRO desalination plant-in-a-box

### PRODUCT FAMILIES

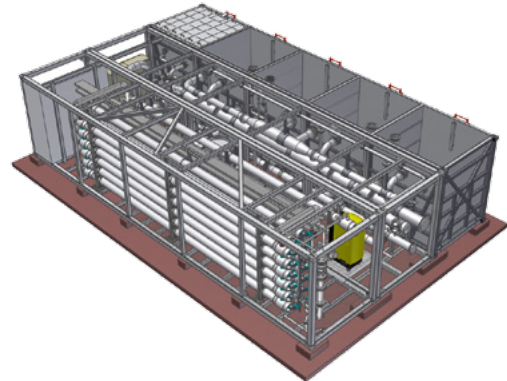
---

#### IDE PROGREEN™ SW-S Series



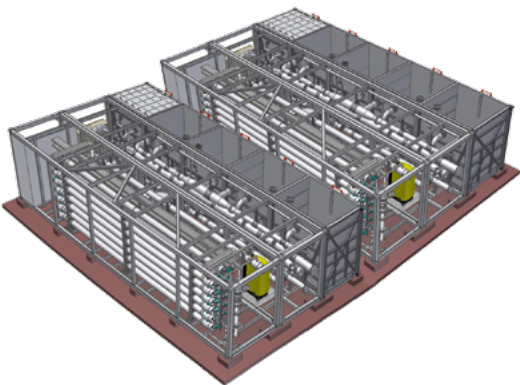
Capacity: 500 m<sup>3</sup>/day - 1,000 m<sup>3</sup>/day  
Consists of 3 standard 20' containers  
Footprint: 6.17m X 7.54m X 3.11m

#### IDE PROGREEN™ SW-M Series



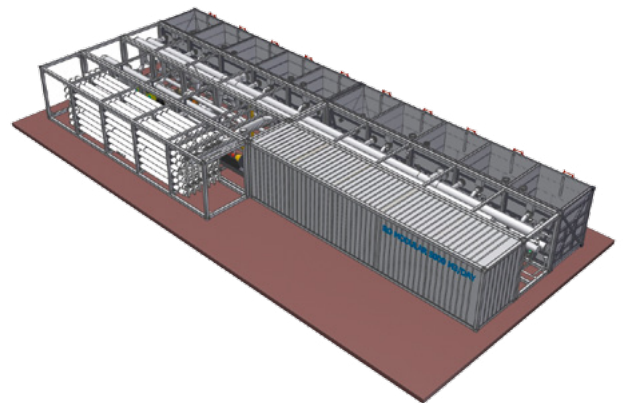
Capacity: 1,100 m<sup>3</sup>/day - 2,000 m<sup>3</sup>/day  
Consists of 3 standard 40' containers  
Footprint: 12.34m X 7.54m X 3.11m

#### IDE PROGREEN™ SW-L Series

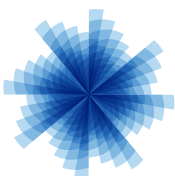


Capacity: 2,200 m<sup>3</sup>/day - 4,000 m<sup>3</sup>/day  
Consists of 2x3 standard 40' containers  
Footprint: 12.17m X 17.59m X 3.11m

#### IDE PROGREEN™ SW-XL 5000 System



Capacity: 5000 m<sup>3</sup>/day  
Consists of 7 standard 40' containers  
Footprint: 24.68m X 10.05m X 3.11m



**IDE**  
Technologies

Your  
Water  
Partners



[www.ide-tech.com](http://www.ide-tech.com)

## IDE PROGREEN™ Models

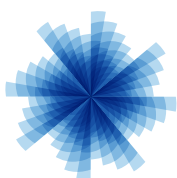
Series	Model	Sub-model	Capacity	
			[m <sup>3</sup> /day]	[gpm]
SW-S	SW-S 500		500	92
	SW-S 600		600	110
	SW-S 700		700	129
	SW-S 800		800	147
	SW-S 900		900	165
	SW-S 1000		1000	184
SW-M	SW-M 1100		1100	202
	SW-M 1200		1200	220
	SW-M 1300		1300	239
	SW-M 1400		1400	257
	SW-M 1500		1500	275
	SW-M 1600		1600	294
	SW-M 1700		1700	312
	SW-M 1800		1800	330
	SW-M 1900		1900	349
	SW-M 2000		2000	367
SW-L	SW-L 2200	SW-M 1100	2200	404
	SW-L 2400	SW-M 1200	2400	441
	SW-L 2600	SW-M 1300	2600	477
	SW-L 2800	SW-M 1400	2800	514
	SW-L 3000	SW-M 1500	3000	551
	SW-L 3200	SW-M 1600	3200	588
	SW-L 3400	SW-M 1700	3400	624
	SW-L 3600	SW-M 1800	3600	661
	SW-L 3800	SW-M 1900	3800	698
	SW-L 4000	SW-M 2000	4000	734
SW-XL	SW-XL 5000		5000	918

### Notes

- All systems are available as skid mounted or installed closed containers
- IDE offers pre-engineered combinations of models for redundancy purposes
- Plants with capacities up to 20,000 m<sup>3</sup>/day are available using multiple SW-XL 5000 modules

### Post Treatment

Includes pH correction, disinfection and limestone remineralisation. Provided in a separate unit



**IDE**  
Technologies

Your  
Water  
Partners



[www.ide-tech.com](http://www.ide-tech.com)